

CENTERMARK

+/- 17,000 SF - RETAIL LAND

BUILD TO SUIT

9181 HIGHWAY 242, CONROE, TX 77385

PROPERTY HIGHLIGHTS

- +/- 17,000 SF Available
- Perfect for QSR, Retail, Car Repair or Sales, Storage, Etc.
- Approximately 1.2 miles East of Interstate 45
- 30' wide driveway off of Highway 242
- Utilities available soon
- Outside floodplain
- School District: Conroe ISD

CONTACT BROKER FOR PRICING

ERIC HUGHES

Partner

C 281-236-9553

eric@centermarkcre.com



6575 West Loop S. Ste 680

Bellaire, TX 77401

713 461 4750

centermarkcre.com

All information contained herein is believed to be reliable. All information is subject to error, omissions, and prior withdrawal without notice.





- **PROPERTY DEMOGRAPHICS**

VEHICLES PER DAY

242 & Glen Eagle Dr -
26,838
242 & Harper's Way -
50,373

AVERAGE HOUSEHOLD INCOME

2 miles - \$120,338
5 miles - \$144,137
10 miles - \$133,181

TOTAL POPULATION

2 miles - 19,228
5 miles - 103,840
10 miles - 455,335

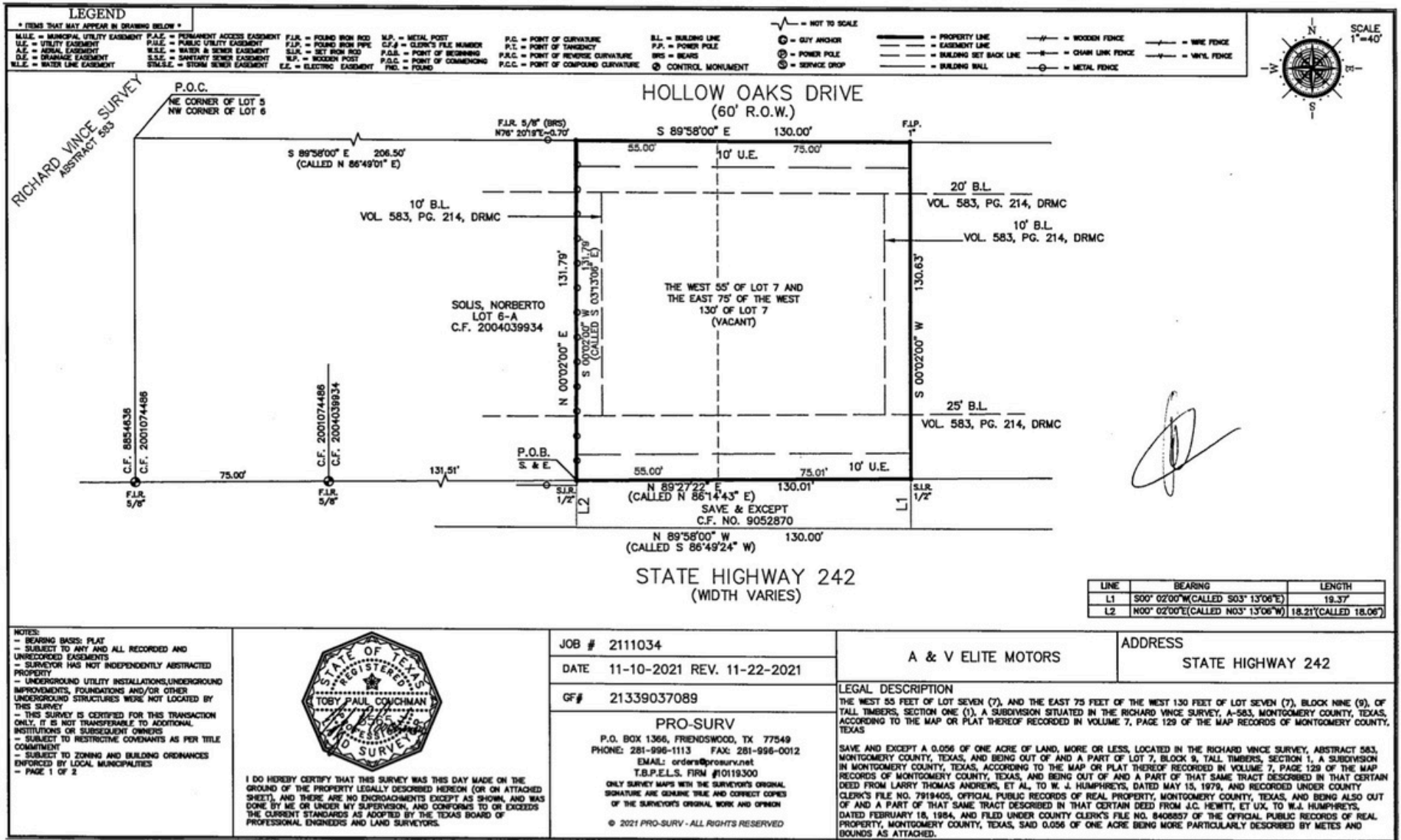
DAYTIME EMPLOYEES

2 miles - 13,326
5 miles - 63,242
10 miles - 171,000



All information contained herein is believed to be reliable. All information is subject to error, omissions, and prior withdrawal without notice.

• SURVEY



All information contained herein is believed to be reliable. All information is subject to error, omissions, and prior withdrawal without notice.

